

**KINON® PATTERN & COLOR NUMBERS:**  
© 601 012 KFR117 X03806 LNX03805

**PATTERN AS SHOWN ONLY**

# SPECIFICATION SHEET

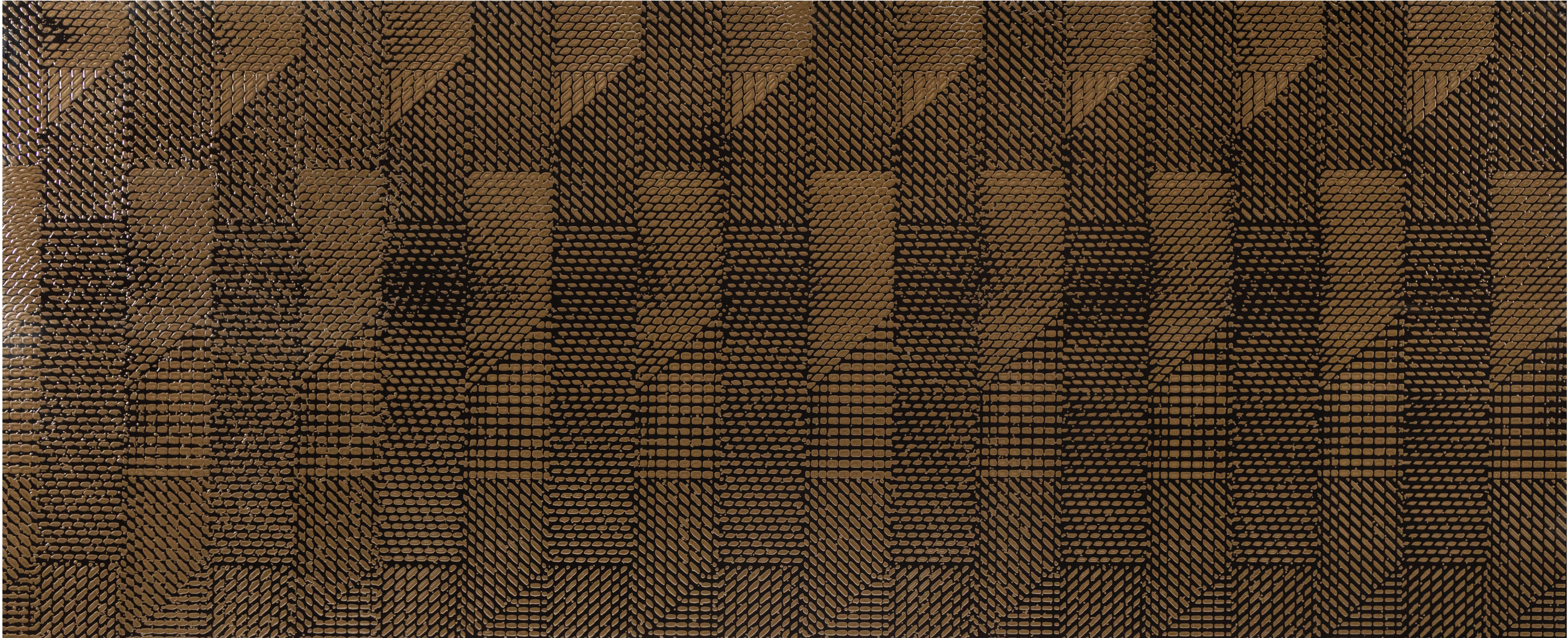
Kinon Surfaces have no ingredients that support microbial life.

January 2021 | [www.kinon.com](http://www.kinon.com) | 561.600.2500

**KINON®**  
SURFACE DESIGN INC

**LUXURY LAMINATES  
CUSTOM CABINETS**

**DOORS | PANELS | TABLE TOPS | DESIGN SERVICES**



- Kinon® patterns are original art work and are protected by copyright.
- Kinon® is a handmade artisan thermoset sheet. Various techniques are carefully used to create our artistic patterns. Therefore like stone and wood, panels will be strikingly similar but never exactly the same. Over a large panel it will have numerous shades and tones, inherent to the Kinon® visual. The surface will also have undulations as well as tiny pores, holes and knots. There will be some irregular pattern repeats which are not seen on a small size sample.
- Kinon ultra cast is not structural and should be adhered to a suitable substrate based on desired properties. Kinon® Ultra Cast™ laminate sheets are pure thermoset plastic and non-porous material that can be used in wet areas.
- All Kinon® sheet thicknesses vary from pattern to pattern and over a full panel of artwork. This is a handmade process.
- All materials age and oxidize. Expect to receive lighter color material with all lighter color Kinon® product orders. The materials will age to the colors of the samples you have over time. **For technical information go to [www.kinon.com](http://www.kinon.com)**

**ADHERE KINON® ULTRA CAST™ SHEETS W/ INTER-COAT DIRECTLY TO WALLS & CEILINGS. SIMPLY TROWEL W/ MORTAR LFT AND LATEX ADDITIVE BONDING TO THE FOLLOWING SUBSTRATES:**  
Sheet Rock & Backer Board

**ADHERE KINON® ULTRA CAST™ W/ CONTACT ADHESIVE OR HOT MELT PUR TO FURNITURE, CABINETS, DOORS, OR PANELS CONSTRUCTED WITH THE FOLLOWING WOOD PRODUCTS:**  
Plywoods, MDF, low oil woods  
(maple, birch, poplar, walnut, etc)

**PANEL SHEET COMPOSITE:**  
Kinon® Ultra Cast™

**KINON® PANEL SIZE:**  
5 ft. x 12 ft. /1524 mm x 3658 mm

**KINON® THICKNESS:**  
0.1 in / 2.5 mm (+/- 0.02 in / 0.5 mm)

**KINON® ULTRA CAST™**  
approximate weight per ft² is 0.6 lbs

**PANEL SHEET COMPOSITE ON MDF:**  
Kinon® on MDF (Medex) or MDF (Medite FR)

**KINON® PANEL SIZE ON MDF:**  
5 ft. x 12 ft. /1524 mm x 3658 mm

**KINON® THICKNESS WITH MDF:**  
0.75 in / 19 mm (+/- 0.02+/- 0.5 mm)  
+ 0.1 in / 2.5 mm (+/- 0.02+/- 0.5 mm)

**KINON® ULTRA CAST™ ON MDF**  
approximate weight per ft² is 3.35 lbs

NAME: \_\_\_\_\_

SIGNATURE: \_\_\_\_\_

DATE: \_\_\_\_\_